

BRUSH BASICS



ONE PART

Brushful of paint, using the brush instructed.



SMALL AMOUNT

Just a dab of paint on the instructed brush.



DOUBLE-LOAD

Placing two Social Artworking paint shades on the same instructed brush.



CORNER OF BRUSH

Dip one side of your brush in the instructed Social Artworking color.

MIXING: Using the brush instructed, combine the Social Artworking paints together on your palette, mixing well to create a new shade.

RINSE BRUSH: Thoroughly remove paint from brush with water. Dry with paper towel to remove excess water.

USING THE SAME BRUSH: Brush used in previous step, without rinsing.

ADD WATER TO BRUSH TO INCREASE FLUIDITY: When creating fine detail, adding water will allow more control.

BRUSHSTROKES



VERTICAL: Mark or movement of brush, moving in an up or down direction on your canvas.



VISIBLE BRUSHSTROKES:

Marks of movement of paint on instructed brush can be seen on your canvas.



HORIZONTAL: Mark or movement of brush across your canvas, parallel to ground or floor.

LONG BRUSHSTROKES: Applying paint with instructed brush in a long, continuous motion.

SHORT BRUSHSTROKES: Applying paint with instructed brush in a quick, choppy motion.

QUICK BRUSHSTROKES: Applying paint with instructed brush in a free, loose motion.

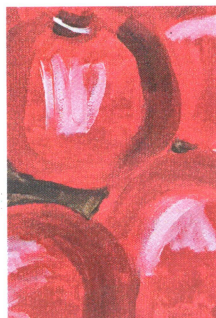
PATTERN TRANSFER

Position pattern on canvas. Secure with tape at top. Slide transfer paper, carbon side down, under pattern. Use stylus or pen to trace over pattern. Remove.

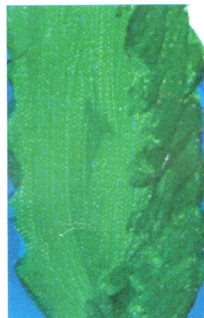
CANVAS PAINTING TECHNIQUES



REACH: Stretching or extending instructed paint around subject or design element.



HIGHLIGHT: Adding lighter colors to a subject to represent or imply a light source in your painting.



SHADE: Adding a darker color to a subject to give your painting depth or shadows.



HORIZON LINE:

Area in painting where two elements of background meet (i.e. wall and table or sky and ground).

WASH: Adding water to paint to create a thin, transparent layer.

LAYER: Apply new color of paint over existing color.

FILL: Using instructed brush and paint, completely cover designated area of your painting.

BLEND: Combining instructed color with previously painted step, while wet.

BLENDING ON CANVAS: Applying colors on double-loaded brush to canvas, by blending.

PULL PAINT: Using instructed brush, spread paint on canvas, while wet.

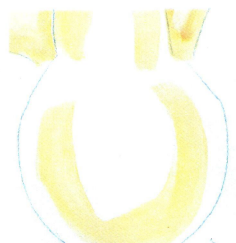
REPEAT STEP TO DARKEN: Decrease transparency by applying additional coats of paint.

REFER TO PHOTO: As seen in photo provided, add instructed step to canvas.

AVOID: Social Artworking is fun and it's your choice where to apply paint. However, sometimes an area, as instructed, should not be painted.



STIPPLE: To create small dots of



CONTOUR: Using instructed paint and brush, painting within an outer edge of a subject or design element.



OUTLINE

A painted line that marks the boundaries of an object or design element.



LOOSELY OUTLINE

A relaxed painted outline.



DRYBRUSH: Using a clean, dry brush and a very small amount of paint to create a rough, transparent layer.